

INSTRUMENT APPROACH CHART - ICAO

BARRA

RNP

RWY 25

(ACFT CAT A,B)



AFIS 118.080

BARRA INFORMATION

AD ELEVATION

5

THR ELEVATION

1

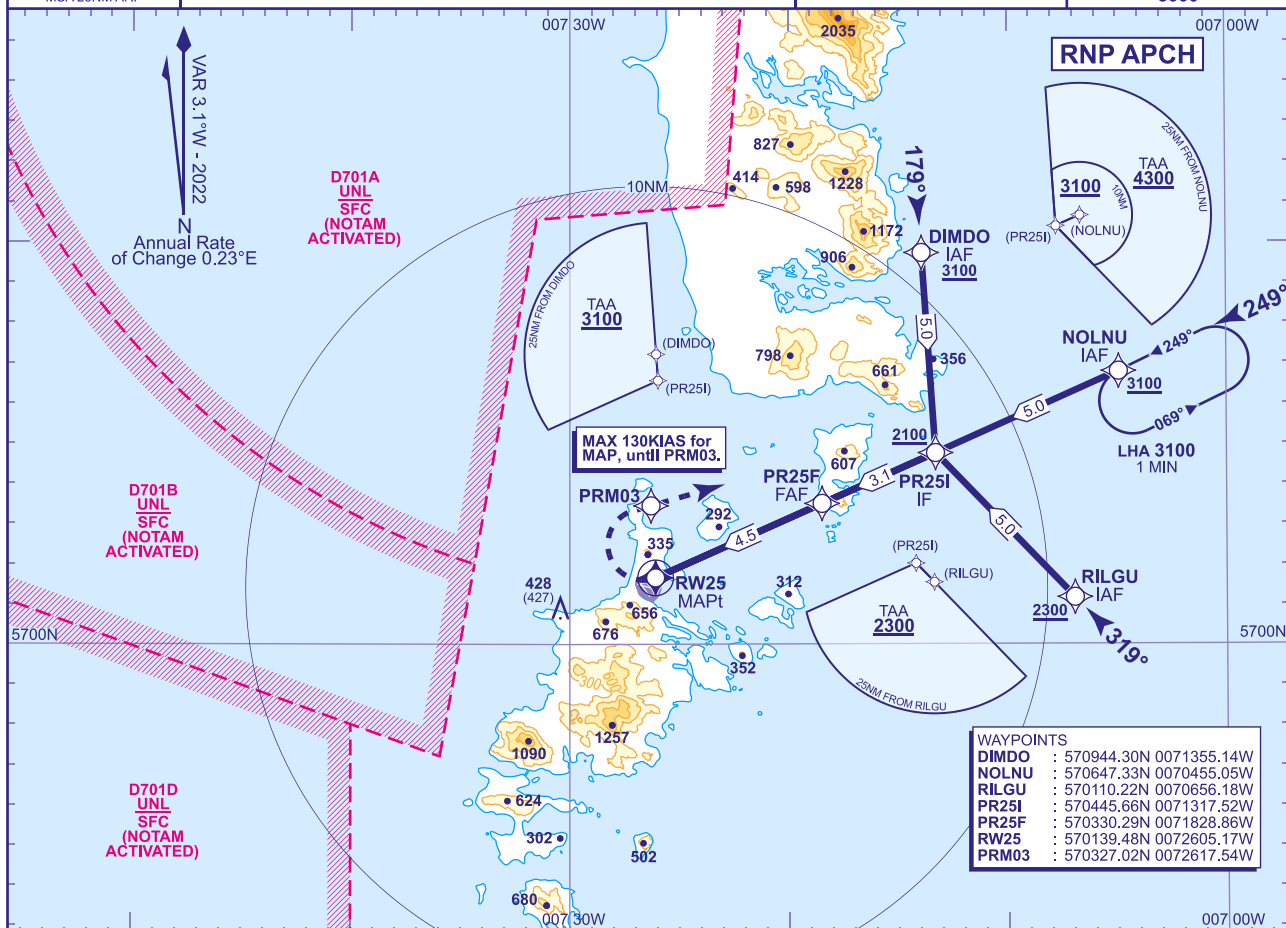
OBSTACLE ELEVATION

428 AMSL
(427) (ABOVE THR)

BEARINGS ARE MAGNETIC

TRANSITION ALTITUDE

3000



RECOMMENDED PROFILE Gradient 5.24%, 320FT/NM

NM to RW25

4

3

ALT(HGT)

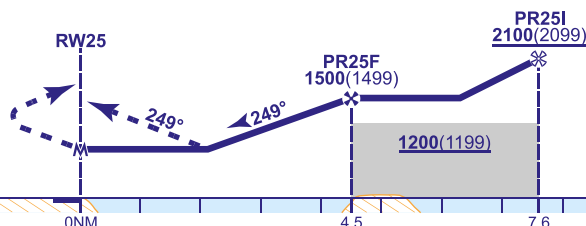
1320(1319)

1000(999)

TCH 40

MAPt (LNAV): RW25

Continuous climb to 3100.
At RW25 turn right to PRM03,
NOLNU to join the hold.
MAX 130 KIAS until PRM03.



Aircraft Category		A	B
OCA (OCH)	LNAV	830(829)	830(829)
Total Area		Not Authorised	
VM(C)OCA (OCH AAL)	North of RWYs 250°M clockwise to 160°M	840(835)	840(835)

Rate of descent	G/S KT	160	140	120	100	80
	FT/MIN	850	740	640	530	420

- NOTE**
- 1 High ground lies in the vicinity of the missed approach area. Do not depart from procedure unless in VMC.
 - 2 Severe turbulence can occur when wind exceeds 30KTS at 2000 within the arc 160°T - 240°T.
 - 3 Use of this RNP procedure is strictly PPR from the aerodrome operator.
 - 4 Prior to commencing the procedure, pilots are to broadcast on AFIS 118.080 with flight details and intentions.

CHANGE (10/24): SPECIFICATION CHANGE.

AERO INFO DATE 19 JUL 24

AD 2-EGPR-8-2